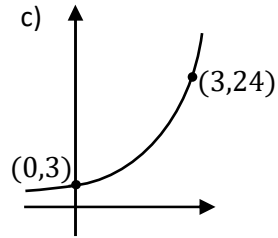
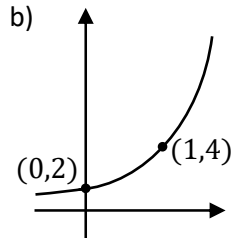
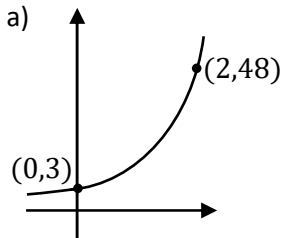




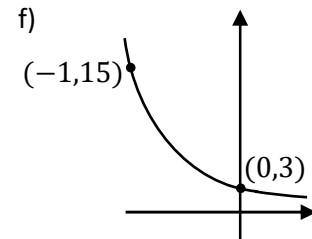
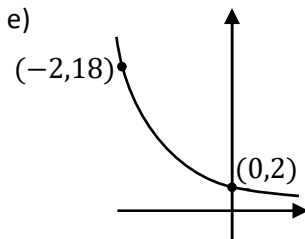
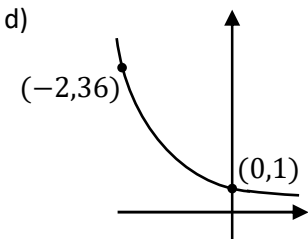
Name: _____



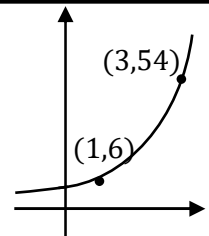
The graphs of $y = ka^x$ are plotted. Calculate the values of a and k to determine the graphs' equations:



The graphs of $y = ka^{-x}$ are plotted. Calculate the values of a and k to determine the graphs' equations:



g) **Extension:** The graph of $y = ka^x$ is plotted.
Calculate the values of a and k to determine the graphs' equation:



Exam question:
A sketch with equation $y = ab^x$ is shown,
where a and b are constants and $b > 0$
The curve passes through the points $(0, 4)$ and $(3, 108)$.
Calculate the value of a and b

