



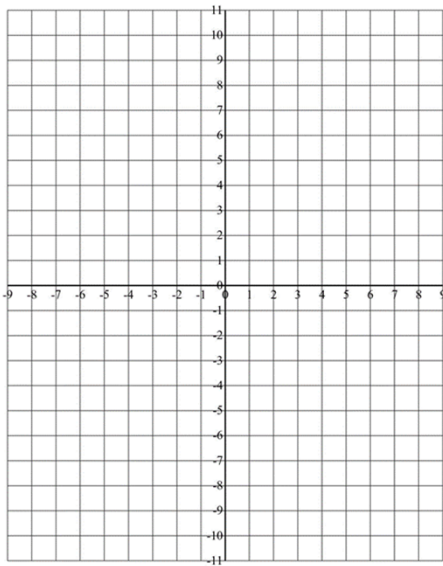
Name: _____



Use the table of values to help you plot the following quadratic graphs:

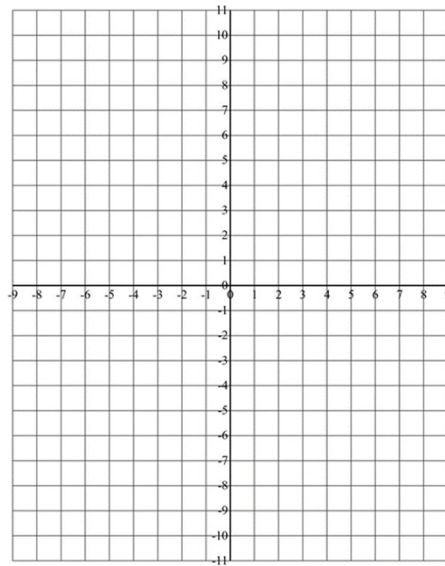
a) $y = x^2 - 1$

x	-2	-1	0	1	2	3
y						



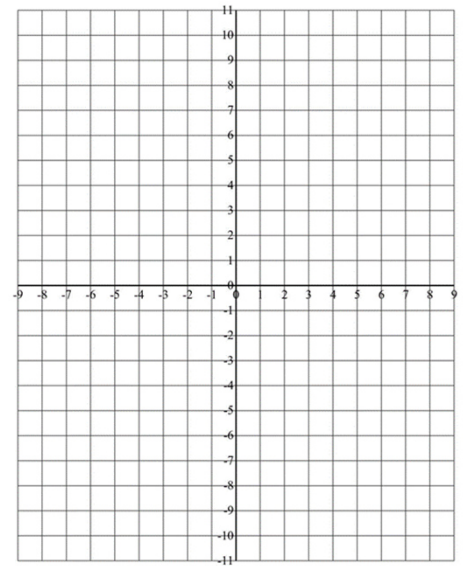
b) $y = x^2 + x$

x	-3	-2	-1	0	1	2
y						



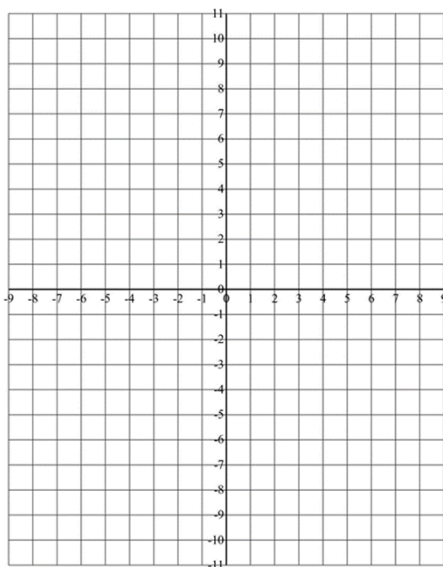
c) $y = x^2 + 3x - 1$

x	-3	-2	-1	0	1	2
y						



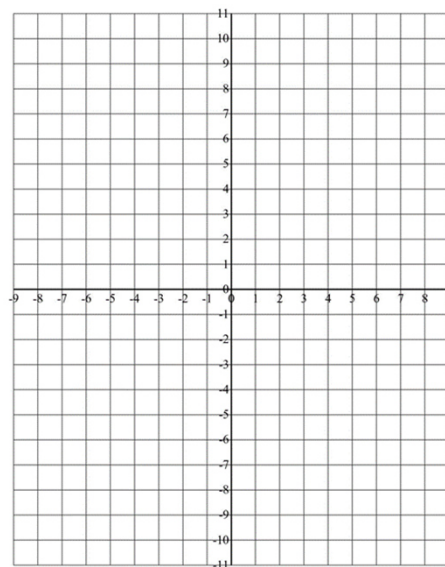
d) $y = x^2 - x - 5$

x	-2	-1	0	1	2	3
y						



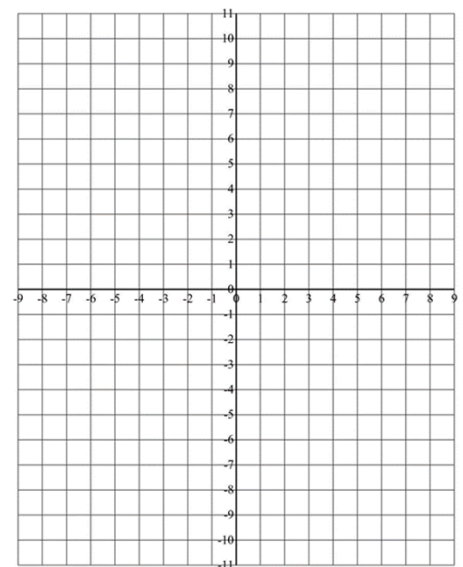
e) $y = 2x^2 - x - 1$

x	-2	-1	0	1	2
y					



f) $y = x^2 - 2x + 1$

x	-2	-1	0	1	2	3
y						



Exam question:

Complete the table of values for $y = x^2 + 5x - 3$

x	-3	-2	-1	0	1	2	3
y	-9			-3		11	



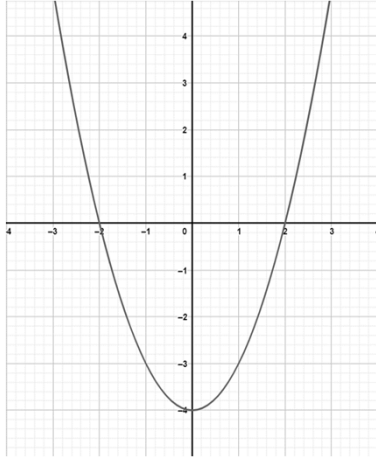


Name: _____



Use the quadratic graphs shown to...

This is the graph of $y = x^2 - 4$

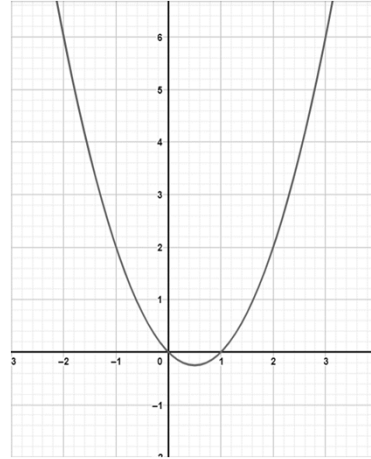


estimate the solutions of:

a) $x^2 - 4 = 3$

b) $x^2 - 4 = -2$

This is the graph of $y = x^2 + 1$

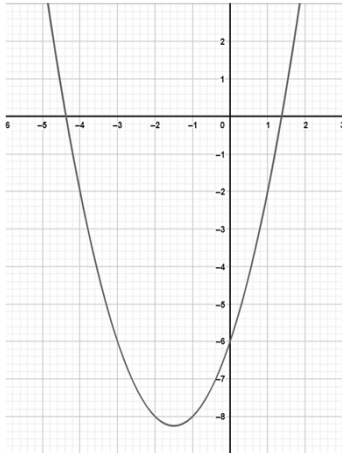


estimate the solutions of:

c) $x^2 + 1 = 3$

d) $x^2 + 1 = 6$

This is the graph of $y = y = x^2 + 3x - 6$

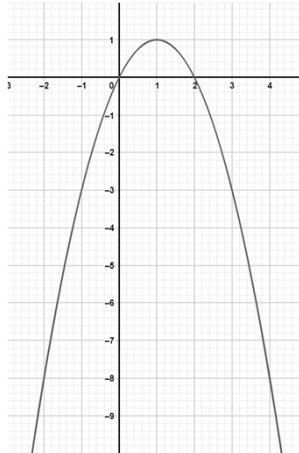


estimate the solutions of:

e) $x^2 + 3x - 6 = 0$

f) $x^2 + 3x = 2$

This is the graph of $y = 2x - x^2$

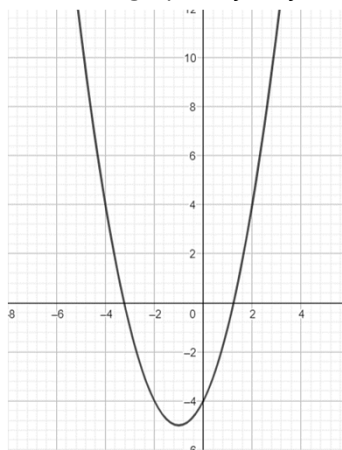


estimate the solutions of:

e) $2x - x^2 = -3$

f) $2x - x^2 + 5 = 0$

This is the graph of $y = y = x^2 + 2x - 4$

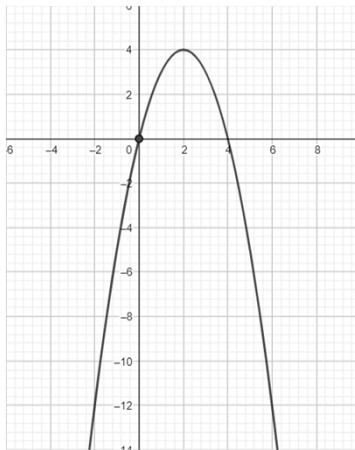


estimate the solutions of:

e) $x^2 + 2x - 4 = 4$

f) $x^2 + 2x = 4$

This is the graph of $y = 4x - x^2$



estimate the solutions of:

e) $4x - x^2 = 0$

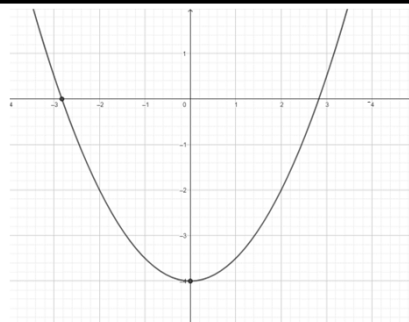
f) $4x - x^2 + 12 = 0$

Exam question:

This is the graph of $y = \frac{1}{2}x^2 - 4$

Use the graph to estimate the solutions of:

$\frac{1}{2}x^2 - 4 = -2$



Solving simultaneous equations from quadratic graphs

61c



maths-school.co.uk

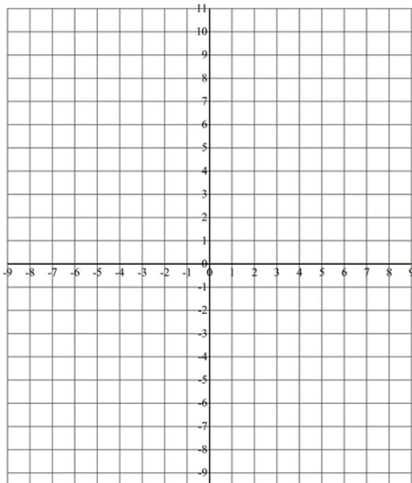
Name: _____



By plotting the graphs, estimate the solutions of these simultaneous equations:

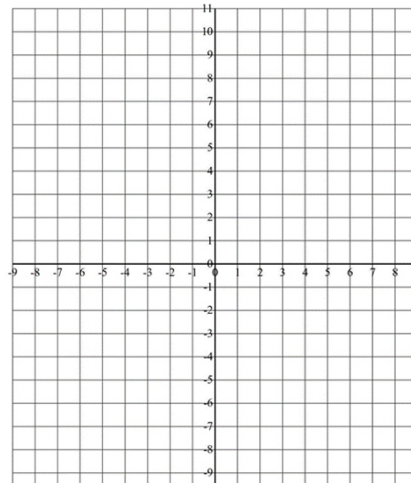
a) $y = x^2$ and $y = 2x$

x	-2	-1	0	1	2	3
y						
y						



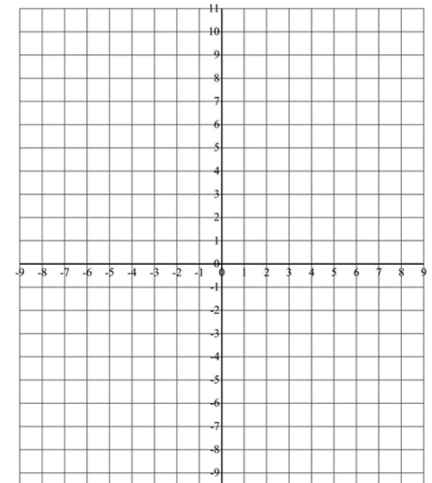
b) $y = x^2 - 7$ and $y = 3 - x$

x	-1	0	1	2	3	4
y						
y						



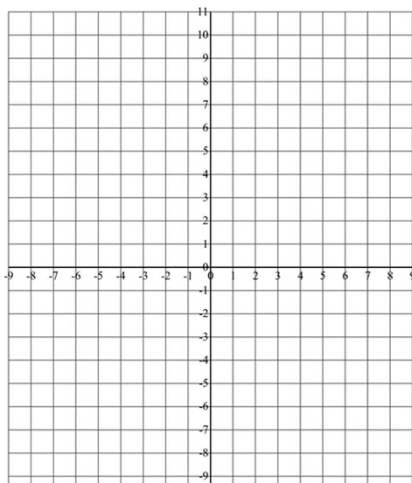
c) $y = x^2 + 2x - 4$ and $y = 4x + 3$

x	-2	-1	0	1	2	3
y						
y						



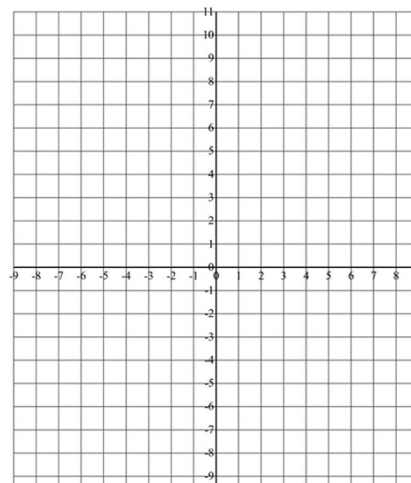
d) $y = x^2 - x - 1$ and $y = 3x$

x	-2	-1	0	1	2	3
y						
y						



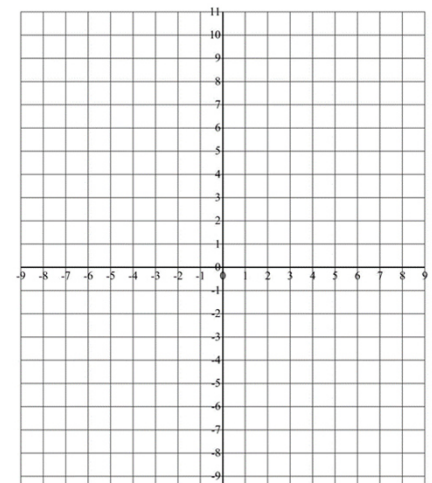
e) $y = x^2 - 3$ and $y = -x$

x	-2	-1	0	1	2	3
y						
y						



f) $y = x^2 - 2$ and $y = -x - 1$

x	-2	-1	0	1	2	3
y						
y						



Exam question:

Estimate the following solutions of the two equations simultaneously using the graphs given of:
 $y = x^2 - 4$ and $y = -x$

